

Wire Name	NN
Progr. DATA	1
Progr. CLK	2
MClr/Vpp	3
Progr. Vdd	4
+5v Ext.	5
GND	6
GND	7
+12v Ext.	8
-12v Ext.	9

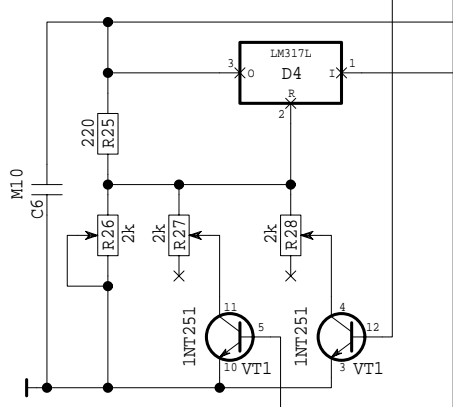
Wire Name	NN
P18	1
P19	2
P20	3
P21	4
P22	5
P23	6
P24	7
P25	8
P26	9
P27	10
P28	11
P29	12
P30	13
P31	14
P32	15

PIC16F84 Evaluation Board With 8 7-Segment Indicators Display List 1 (1)

Programmer's PC Interface Port
SS2

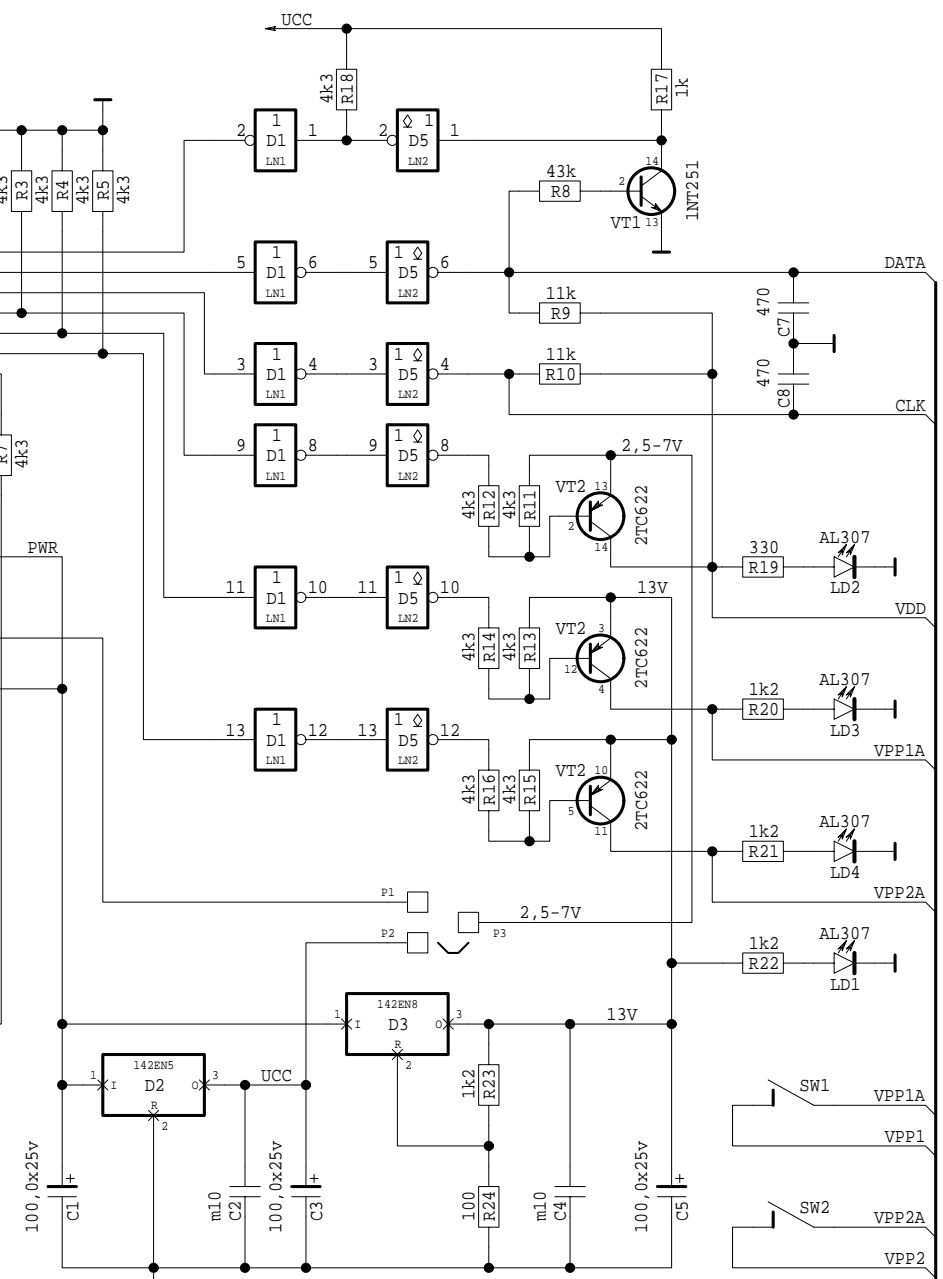
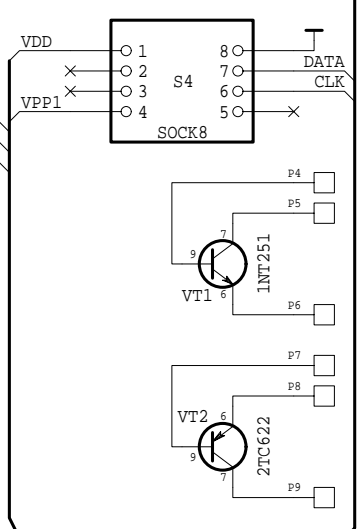
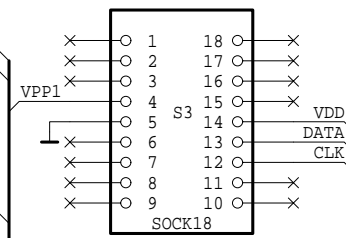
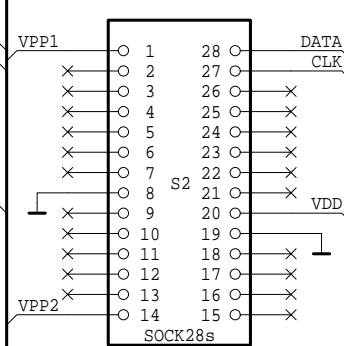
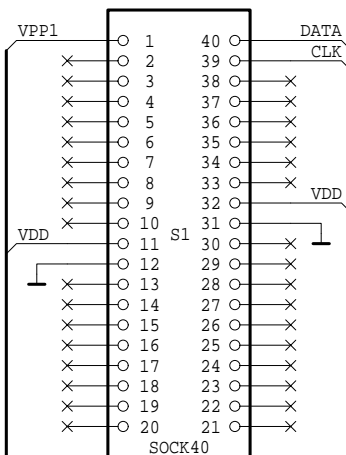
Wire Name	NN	DATA_OUT
Data Out	1	CLOCK
Clock	2	VDD_SW
Vdd	3	VPP1_SW
Vpp1	4	VPP2_SW
Vpp2	5	VDD_MIN
Vdd Min	6	VDD_NOM
Vdd Nom	7	DATA_IN
Data In	8	
Gnd	9	
Gnd	10	
Gnd	11	
Gnd	12	
Gnd	13	
+Power Sup.	14	PS_IN
+Power Sup.	15	

Main Power Supply
15 - 20 v



Programmer's Output Port
SS1

Wire Name	NN	DATA
Progr. DATA	1	DATA
Progr. CLC	2	CLK
MClr/Vpp	3	VPP1
Progr. Vdd	4	VDD
	5	X
GND	6	X
GND	7	X
	8	X
	9	X



Use Vpp2 only for PIC14000